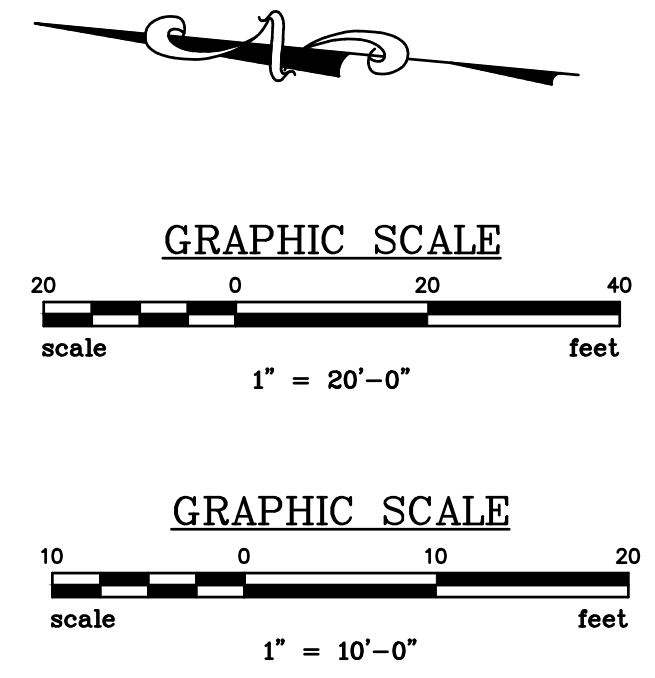
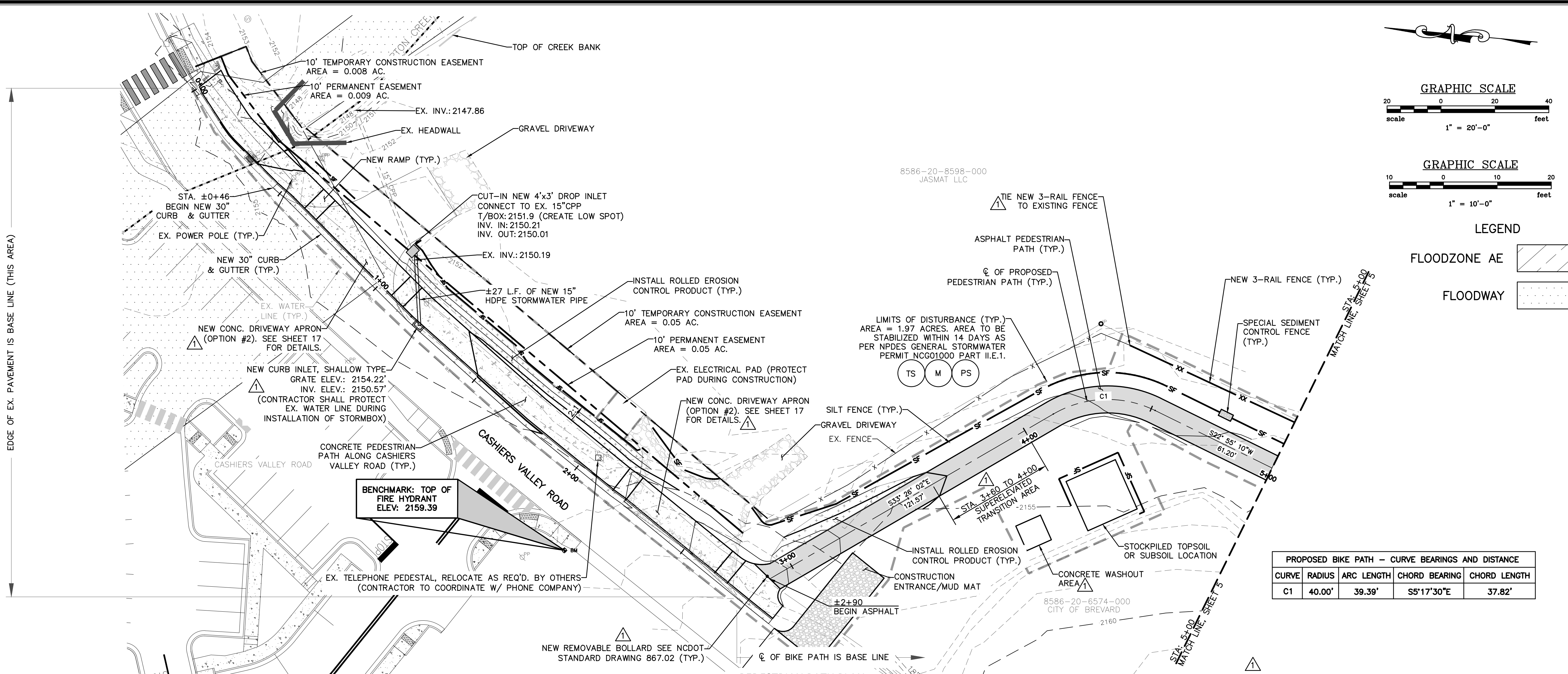


THIS DRAWING IS THE PROPERTY OF SUMMIT ENGINEERING GROUP, INC. AND IS NOT TO BE REPRODUCED OR TRANSMITTED IN ANY FORM OR BY ANY MEANS, ELECTRONIC OR MECHANICAL, INCLUDING PHOTOCOPYING, RECORDING, OR BY ANY INFORMATION STORAGE AND RETRIEVAL SYSTEM, WITHOUT THE WRITTEN PERMISSION OF SUMMIT ENGINEERING GROUP, INC. AND IS NOT TO BE USED ON ANY OTHER PROJECT.

N:\PROJECTS\22017_BREVARD - BIKE PATH\DWG\22017-Base_TANNERY_NCDOT.DWG, 5/28/2026, 9:31:39 AM



LEGEND

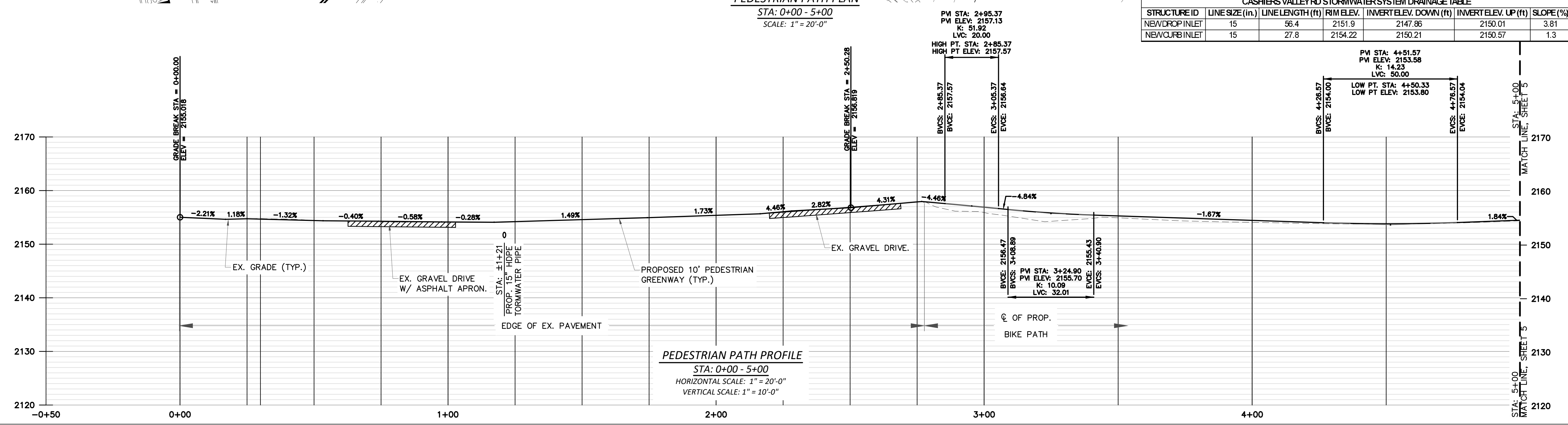
FLOODZONE AE	
FLOODWAY	

PROPOSED BIKE PATH - CURVE BEARINGS AND DISTANCE

CURVE	RADIUS	ARC LENGTH	CHORD BEARING	CHORD LENGTH
C1	40.00'	39.39'	S5°17'30"E	37.82'

CASHIERS VALLEY RD STORMWATER SYSTEM DRAINAGE TABLE

STRUCTURE ID	LINE SIZE (in)	LINE LENGTH (ft)	RIM ELEV.	INVERT ELEV. DOWN (ft)	INVERT ELEV. UP (ft)	SLOPE (%)
NEW DROP INLET	15	56.4	2151.9	2147.85	2150.01	3.81
NEW CURB INLET	15	27.8	2154.22	2150.21	2150.57	1.3



REVISIONS

NO.	DESCRIPTION	DATE	BY
1	REVISED BASED ON 1/14/25 MFC		MFC
2	REVISED BASED ON 1/22/26 MFC		MFC
3	REVISION FOR NCDOT REVIEW		MFC

APPROVALS

PROJECT ENG:	AF
DESIGNED BY:	AF
DRAWN BY:	ADK
CHECKED BY:	MFC
APPROVED:	AF

SEAL
 NORTH CAROLINA PROFESSIONAL ENGINEER
 0099225
 Alvin Fullen
 VIN FULLEN, P.E.
 8/28/2026

SUMMIT ENGINEERING GROUP, INC.
 ENGINEERS • PLANNERS • SURVEYORS
 9601 Warren H. Abernathy Hwy.
 Spartanburg, SC 29301
 (864)949-1111

PEDESTRIAN WALKWAY PLAN AND PROFILE
 SHEET TITLE
 DATE: DEC. 2023 SCALE: AS SHOWN

ESTATE TRAIL PHASE III (TANNERY PROPERTY) FOR THE CITY OF BREVARD, NC
 PROJECT: TRANSLVANIA COUNTY NORTH CAROLINA
 N.B. NO. SHEET 4 OF
 PROJECT NO. 22017
 FILE: 22017_Base